



2017  
香港工業獎  
HONG KONG AWARDS  
FOR INDUSTRIES

設備及機器設計獎  
EQUIPMENT AND MACHINERY  
DESIGN AWARD



**極慳能源**  
每小時祇需18.2度電



**AS-44B(G)**

單缸運輸帶式洗碗碟機  
(熱回收)

Single Tank Conveyor Type Dishwasher  
(Heat Recovery)

# AS-44B(G)

單缸運輸帶式洗碗碟機 (熱回收)

Single Tank Conveyor Type Dishwasher (Heat Recovery)

卓滙洗碗碟機特色

CHAMPION Dishwasher with Excellent Characteristics



## 環保節能

ENVIRONMENTAL  
ENERGY SAVING

環保節能設計，既可節省能源，又可達致最高經濟效益。

Our green-design reduces energy consumption which brings you the highest economic efficiency.



## 穩定耐用

STABLE AND DURABLE

全機採用SUS 304 1.5mm不鏽鋼結構及機械式控制設計，於高溫及潮濕的環境中亦應能發揮其耐用性及穩定性。

The construction adopt SUS 304 1.5mm stainless steel and mechanical control. Durability and stability can be maintained even in high temperature and moisture environment.



## 高效運作

HIGH EFFICIENCY

高速清洗速度，每節只需16秒；強勁水力輸出，提升洗滌效率，減省人手。

High speed cleaning design, clean a rack only use 16 seconds; strong washing power, enhance the washing efficiency and manpower saving.



## 國際認可

INTERNATIONAL  
RECOGNITION

CHAMPION洗碗碟機全系列獲國際認可，符合國際食品安全及衛生標準；認可設備於材料、易潔度、溫度、時間、水壓、運作設計等、各方面均達到國際標準。

CHAMPION Dishwasher complied with the international standard of food safety and hygiene, approved by HACCP which achieved the standard of material used, washable, temperature, time, water pressure and operation, hygiene and safety image enhanced.



## 國際廠房

INTERNATIONAL  
MANUFACTORY

首家港資公司創立國際性廠房，全線洗碗碟機在嚴密的工序及監控下生產；從技術研發，原材料選材，流程設計，質量管理及控制都一絲不苟。

The first international dishwashers' manufactory financed and managed by Hong Kong Company. The full series of dishwashers are manufactured under rigorous procedures and inspection, from research and development, materials selection, procedure design, to quality control.



## 簡單易用

SIMPLE TO USE

採用簡易操作系統，一按式啟動及自動化操作，任何用家操作自如。

Adopt user friendly operation system. "One-Button" activation and automatic operation are easy for any users to control.

## 信心保證 Quality Assurance

- 食品安全認證 HACCP International Food Safety Certificate 
- CSA認證  Certificate
- 歐盟認證  Certificate
- 質量管理認證 Quality Management System  ISO 9001:2018 Certificate
- 香港政府食物環境衛生署認可牌照 HKSAR Food and Environmental Hygiene Dept. Approved Certificate



# 顯著熱回收效能 Outstanding Heat Recovery Efficiency

# 每年賺取高達 \$140,000 電費

## Earn up to \$140,000 Tariff per year



## 能源節省 Energy saving

	傳統機型 Traditional Model	AS-44B(G)
每小時用電量 Energy Consumption per hour	54 kWh	18.2 kWh*
每日運作 Daily Operation Time	6小時(hour)	8小時(hour)
能源節省 Energy Saved	6,444 kWh / 月(Month)	8,592 kWh / 月(Month)
賺取高達 Possible Earn	<b>\$ 9,054 / 月</b> Month	<b>\$ 12,072 / 月</b> Month

\*以上資料根據香港生產力促進局驗證 (項目編號 00697) 只作參考用途，節省率會受實際環境及操作所影響。  
The above information is based on the testing result of Hong Kong Productivity Council (Project Number 00697) for reference purposes only. The saving is affected by actual environment and washing procedure.

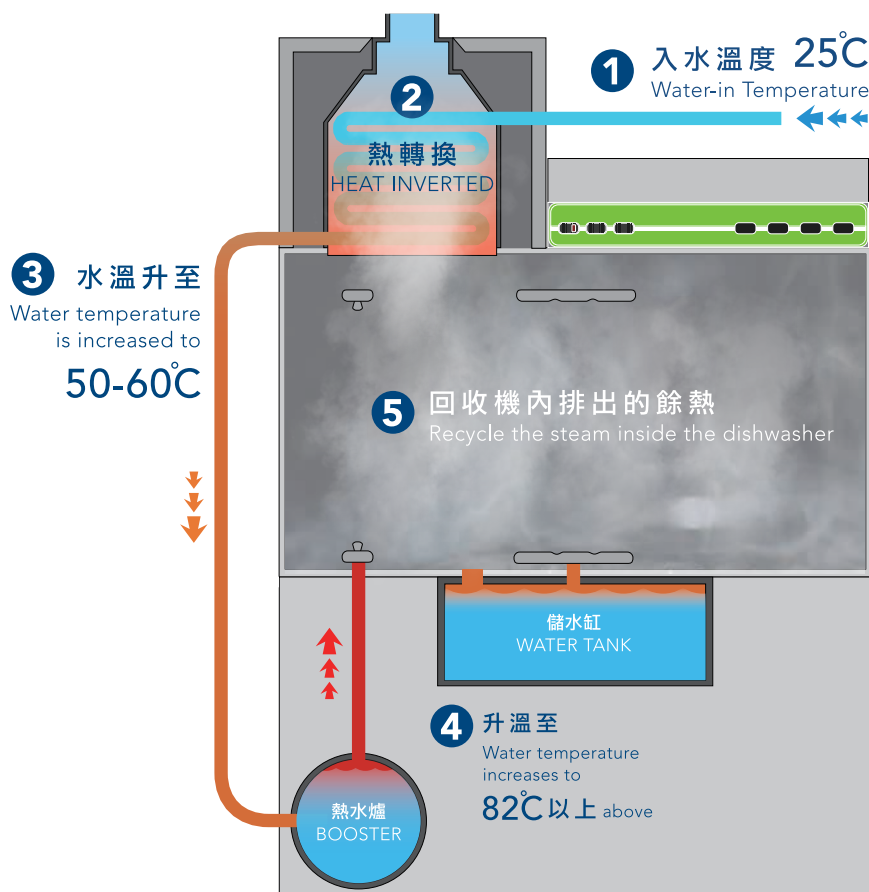
## 首個香港專利 熱回收系統

First Patented Heat Recovery System in Hong Kong

技術專利編號 **HK1214910**  
Technology Patent No.

以循環使用餘熱  
達至能源節省

Saving energy by reusing the steam



### 採用雙溫控分段式加熱設計技術 熱水爐加熱更準確及節能

比傳統熱水爐更能穩定過水溫度，保證消毒效果，有效節省能源運用。

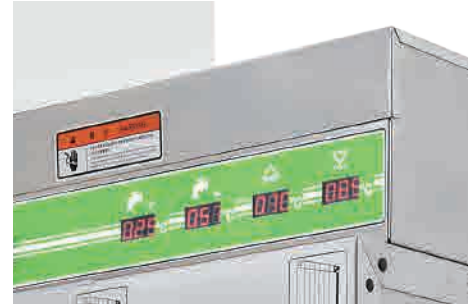
Booster with dual thermostat technology can provides a much stable temperature for rinsing and sanitizing comparing with traditional booster, hence enhance the energy saving efficiency.



### 更舒適的工作環境 員工滿意度提升30%

傳統洗碗碟機會將機內餘熱從兩邊出口散發，但我們循環使用餘熱，改善洗碗房的酷熱環境，降低室溫，優化員工工作環境。

Traditional dishwasher distributed steam through the exits, however we recycle such resources and mitigate the heat effect of warewashing room. The working environment can be enhanced by reducing temperature.



▲ 面版溫度顯示設有：入水、熱回收、主洗、過水；能監察能源節省溫度及消毒溫度

Control panel indicates the temperature of water inlet, heat recovery system, washing and rinsing process which can monitor the temperature of energy saving and sterilization



## 技術規格 Technical Data

外形尺寸 Size	1150 (W) x 695 (D) x 1979 (H) mm
開門高度 Door Opening Height	1950 mm
機器淨重 Net Weight	240 kg
膠篩尺寸 Rack Size	500 (W) x 500 (D) mm
每篩運行時間 Operation Speed / Rack	16 sec / Rack
最大洗滌量 Machine Maximum Capacity	230 Racks / Hour
最高洗滌高度 Loading Height	450 mm
水缸容量 Tank Capacity	65 L
每篩耗水量 Rinse Usage	2 L / Rack
建議水壓 Suggest Water Pressure	15 – 20 psi
主洗水缸加熱功率 Wash Tank Heater	15 kW
主洗水泵功率 Wash Pump Power	1.5 kW
運輸帶馬達功率 Conveyor Motor	0.5 kW
內置電熱水爐功率 Internal Booster Heater	27kW
總耗電功率 Electrical Loading	44kW
供電要求 Power Supply	380 V / 50 Hz / 3 / N / PE (80 Amp)

# AS-44B(G)

單缸運輸帶式洗碗碟機 (熱回收)  
Single Tank Conveyor Type Dishwasher (Heat Recovery)

## 透視圖 Perspective

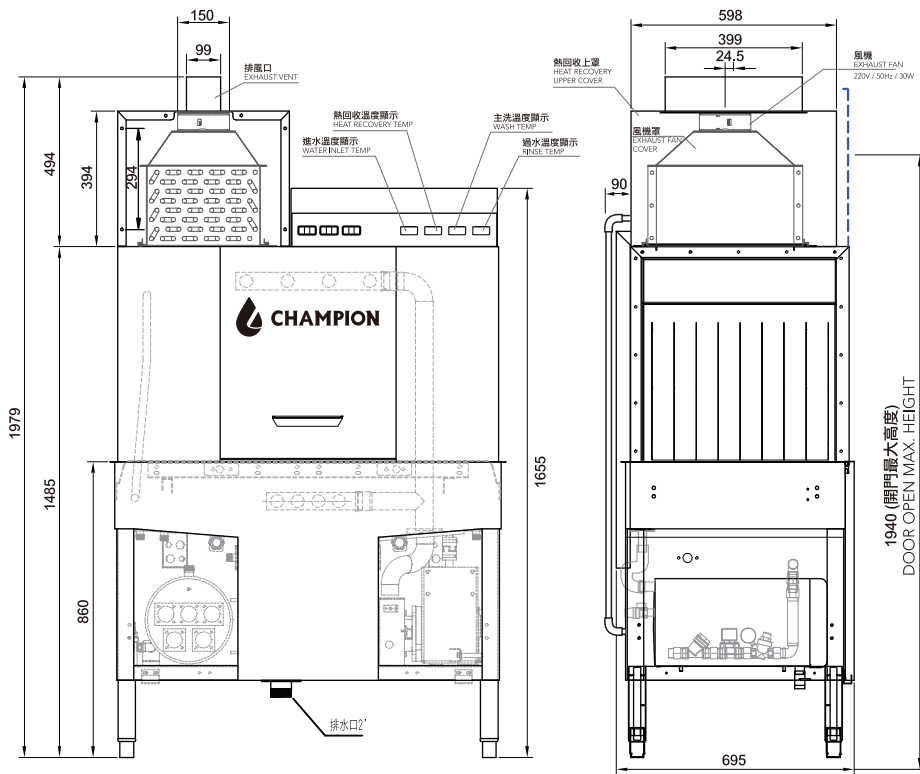
### 運作圖 Operation Diagram



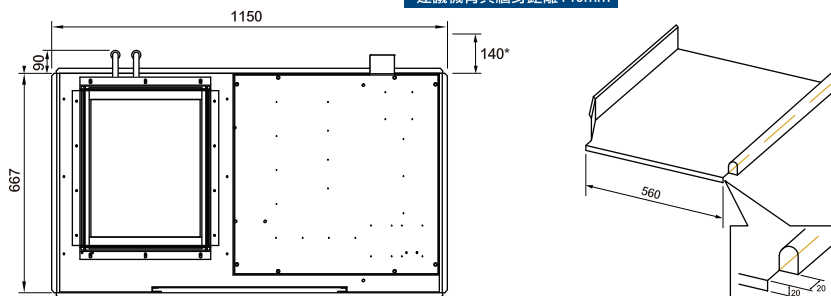
標準式運作圖  
Standard Type Operation

轉角式運作圖  
Corner Type Operation

### 透視圖 Perspective



\*建議機背與牆身距離140mm



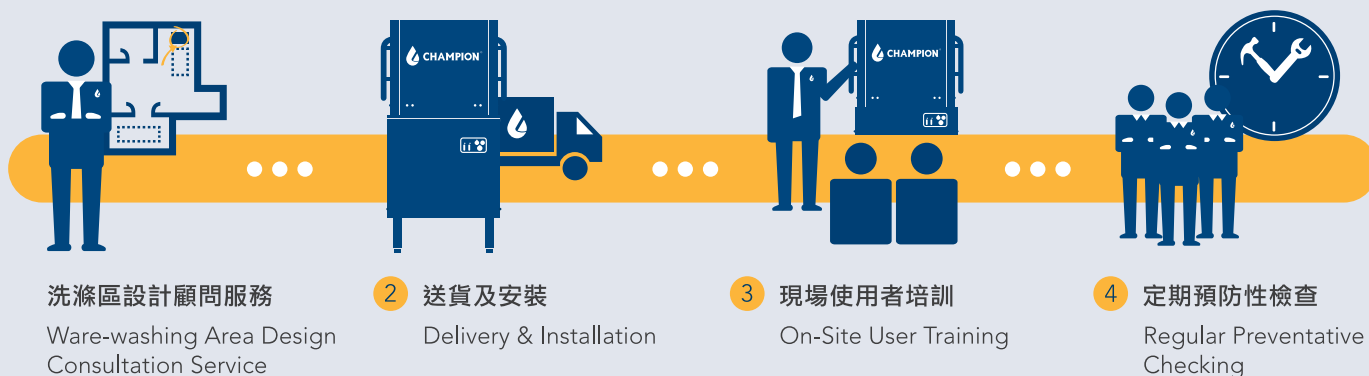
#### 安裝要求：

- (1) 電源：380V / 50Hz / 3 / N / PE，電源線為25mm<sup>2</sup> 及 50Amp隔離開關
- (2) 供水：管徑 3/4"，球閥3/4"，3/4"外牙絲，建議水壓15-25psi
- (3) 排水口為：排水口直徑 2"

## 原廠一站式服務 Manufacturer One-Stop Services

我創造 · 我重視  
We Make · We Care

從設計流程開始，直至售後支援服務，卓滙都細心關顧客戶所需。  
We care about our customers and take care of anything starting from design, after-sale and maintenance services.



## 售後服務才是我們的開始 Post-sales Service is where our Business start.



專業顧問團隊  
Professional Consulting Team



衛生諮詢培訓  
Hygiene Consultation & Training



安心檢查維護  
Secure Maintenance Service



流動工程車隊  
Engineering Motorcade



充裕零件供應  
Sufficient Spare Parts Supply

卓滙集團  
Champion Group

香港  
Hong Kong

☎ (852) 2475 9875  
✉ enquiry\_hk@champion-chem.com

中國  
China

☎ (86) 0755 2821 8882  
✉ enquiry\_ch@champion-chem.com

澳門  
Macau

☎ (853) 2823 0511  
✉ enquiry\_mc@champion-chem.com

台灣  
Taiwan

☎ (886) 2 2643 6111  
✉ enquiry\_tw@champion-chem.com



2017  
香港工商業獎  
HONG KONG AWARDS  
FOR INDUSTRIES

設備及機器設計獎  
EQUIPMENT AND MACHINERY  
DESIGN AWARD



## AS-44B(G-T)

煤氣熱注單缸運輸帶式  
洗碗碟機 (熱回收)  
Gas Heated Single Tank  
Conveyor Type Dishwasher  
(Heat Recovery)

# AS-44B(G-T)

煤氣熱注單缸運輸帶式洗碗碟機 (熱回收)

Gas Heated Single Tank Conveyor Type Dishwasher (Heat Recovery)

卓滙洗碗碟機特色

CHAMPION Dishwasher with Excellent Characteristics



## 環保節能

ENVIRONMENTAL  
ENERGY SAVING

環保節能設計，既可節省能源，又可達致最高經濟效益。

Our green-design reduces energy consumption which brings you the highest economic efficiency.



## 穩定耐用

STABLE AND DURABLE

全機採用SUS 304 1.5mm不鏽鋼結構及機械式控制設計，於高溫及潮濕的環境中亦應能發揮超高耐用性及穩定性。

The construction adopt SUS 304 1.5mm stainless steel and mechanical control. Durability and stability can be maintained even in high temperature and moisture environment.



## 高效運作

HIGH EFFICIENCY

高速設計及強勁水力輸出，提升洗滌效率，減省人手。

High speed design and strong washing power, enhance the washing efficiency and manpower saving.



## 國際認可

INTERNATIONAL  
RECOGNITION

CHAMPION洗碗碟機全系列獲國際認可，符合國際食品安全及衛生標準；認可設備於材料、易潔度、溫度、時間、水壓、運作設計等、各方面均達到國際標準。

CHAMPION Dishwasher complied with the international standard of food safety and hygiene, approved by HACCP which achieved the standard of material used, washable, temperature, time, water pressure and operation, hygiene and safety image enhanced.



## 國際廠房

INTERNATIONAL  
MANUFACTORY

首家港資公司創立國際性廠房，全線洗碗碟機在嚴密的工序及監控下生產；從技術研發，原材料選材，流程設計，質量管理及控制都一絲不苟。

The first international dishwashers' manufactory financed and managed by Hong Kong company. The full series of dishwashers are manufactured under rigorous procedures and inspection, from research and development, materials selection, procedure design, to quality control.



## 簡單易用

SIMPLE TO USE

採用簡易操作系統，一按式啟動及自動化操作，任何家用操作自如。

Adopt user friendly operation system. "One-Button" activation and automatic operation are easy for any users to control.

## 信心保證 Quality Assurance

- 食品安全認證 HACCP International Food Safety Certificate 
- CSA認證  Certificate
- 歐盟認證  Certificate
- 質量管理認證 Quality Management System  ISO 9001:2018 Certificate
- 香港政府食物環境衛生署認可牌照 HKSAR Food and Environmental Hygiene Dept. Approved Certificate



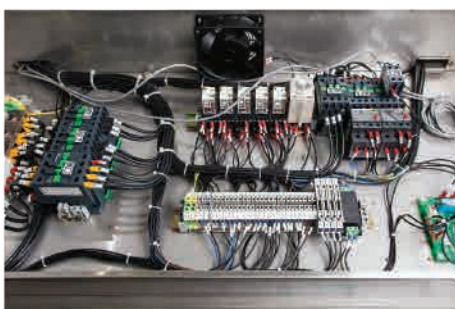


## 卓越設計功能 AS-44B(G-T) Excellent Design



▲ 採用內凹式噴孔設計，防堵塞，並加強清洗能力和擴闊噴洗範圍

Debossed anti-clog nozzles provides powerful washing performance



▲ 機頂式控制箱設計，令維修檢查更方便快捷，縮短停機時間

Top mounted control panel for convenient operation and easy maintenance, reduce the machine downtime

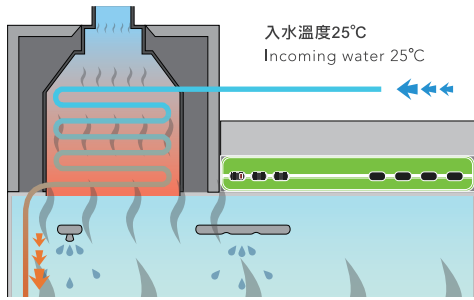
▼ 採用ABB合金強勁水泵摩打，並配合耐用不銹鋼車葉

ABB pump motor & alloy impeller guarantee maximum durability



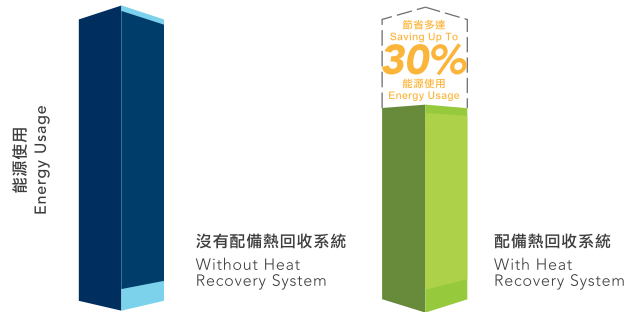
▲ 重工齒輪式馬達傳送系統，連防障礙和過荷保護  
Heavy duty gear box conveyor system with jam and overload protection

## 熱回收系統 Heat Recovery System



餘熱回收，提升入水溫度  
Waste heat recovery increase the temperature of incoming water

## 熱回收能源節省 Energy Saving by Heat Recovery System



\*以上資料只作參考用途，實際數據需視乎現場環境情況。  
The above information is for reference purposes only. Actual data is subjected to on-site situation.

## 技術規格 Technical Data

外形尺寸 Size	1150 闊(W) x 695 深(D) x 1979 高(H) 毫米(mm)
開門高度 Door Opening Height	1950 毫米(mm)
機器淨重 Net Weight	240 公斤(kg)
膠篩尺寸 Rack Size	500 闊(W) x 500 深(D) 毫米(mm)
每篩運行時間 Operation Speed / Rack	16 秒(sec) / 篩(Rack)
最大洗滌量 Machine Maximum Capacity	230 篩(Racks) / 小時(Hour)
最高洗滌高度 Loading Height	450 毫米(mm)
水缸容量 Tank Capacity	65 公升(Liter)
每篩耗水量 Rinse Usage	2 公升(Liter) / 篩Rack
建議水壓 Suggest Water Pressure	15 - 25 每磅 / 平方英寸 (psi)
主洗水缸加熱功率 Wash Tank Heater	15 千瓦(kW)
主洗水泵功率 Wash Pump Power	1.5 千瓦(kW)
運輸帶馬達功率 Conveyor Motor	0.5 千瓦(kW)
升溫爐功率 Rinsing Tank Power	5.4 千瓦(kW)
總耗電功率 Electrical Loading	23 千瓦(kW)
供電要求 Power Supply	380 伏特(V) / 50 赫茲(Hz) / 三相(3 Phase) 【 40 安培(Amp) 】
煤氣熱水爐 Town Gas Water Heater	NJW321 FEL



## 煤氣熱水爐 Town Gas Water Heater (NJW321 FEL)

外形尺寸 Size	464 闊(W) x 615 高(H) x 240 深(D) 毫米(mm)
熱水輸出量 Hot Water Output (80°C)	13.4 公升(Liter) / 分鐘(min) (入水溫度23.6°C Incoming at 23.6°C)
用氣量 Gas Consumption	66.3 千瓦(kW)
供電要求 Power Supply	AC 220 伏特(V) / 50 赫茲(Hz) / 單相(1 Phase) 【 13 安培(Amp) 】
安裝模式 Installation	掛牆式 Wall Mounting

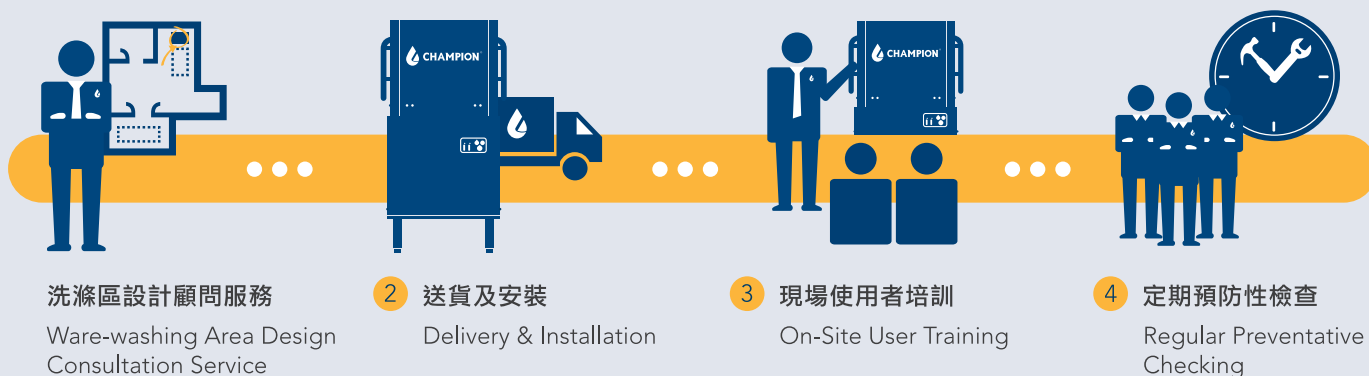
煤氣公司 工商業查詢熱線 Towngas C & I Enquiry Hotline : 2963 3300



## 原廠一站式服務 Manufacturer One-Stop Services

我創造 · 我重視  
We Make · We Care

從設計流程開始，直至售後支援服務，卓滙都細心關顧客戶所需。  
We care about our customers and take care of anything starting from design, after-sale and maintenance services.



## 售後服務才是我們的開始 Post-sales Service is where our Business start.



專業顧問團隊  
Professional Consulting Team



衛生諮詢培訓  
Hygiene Consultation & Training



安心檢查維護  
Secure Maintenance Service



流動工程車隊  
Engineering Motorcade



充裕零件供應  
Sufficient Spare Parts Supply

卓滙集團  
Champion Group

香港  
Hong Kong

☎ (852) 2475 9875  
✉ enquiry\_hk@champion-chem.com

中國  
China

☎ (86) 0755 2821 8882  
✉ enquiry\_ch@champion-chem.com

澳門  
Macau

☎ (853) 2823 0511  
✉ enquiry\_mc@champion-chem.com

台灣  
Taiwan

☎ (886) 2 2643 6111  
✉ enquiry\_tw@champion-chem.com